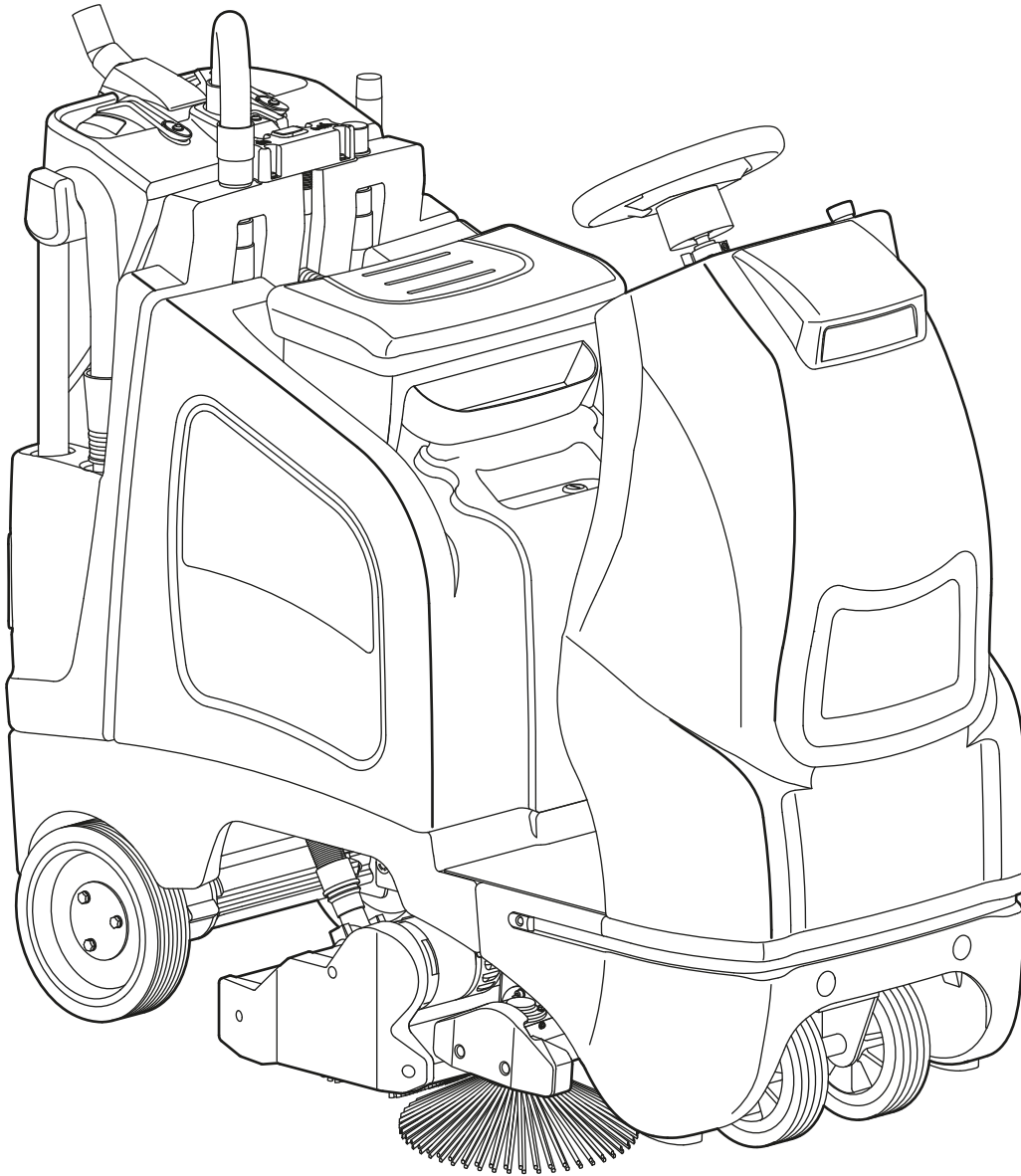




TASKI

AERO 3500µmicro

EN .2



DOWNLOAD
Instructions of Use
for TASKI machines



EN Translation of the original instructions of use



Always read the instructions of use and the safety instructions before using the machine for the first time. The instructions of use must be kept in a safe and well-accessible place so that you can refer to them at any time.

Legend:



Danger:

This sign designates important information. Failure to follow these instructions may endanger persons and/or cause extensive property damage!



Warning:

This sign designates important information. Failure to follow these instructions may endanger persons, result in malfunctions, and cause property damage!



Caution:

This sign designates important information. Failure to follow these instructions may result in malfunctions and property damage!



Notice:

This sign designates important information regarding the efficient use of the product. Failure to follow these instructions may cause malfunctioning!

Content

Safety instructions	2
Cleaning products	3
Further documents	3
Structural layout	4
Batteries	5
Prior to commissioning	7
Beginning work with the machine	10
End of operation	11
Service, maintenance and care	12
Malfunctions	13
Technical information	13
Accessories	14
Error codes	14
Transport	14
Disposal	14
Machine Dimensions	14

Intended use

The machines are intended for commercial use (e.g. in hotels, schools, hospitals, factories, shopping centers, sports centers, offices, etc.).

The application techniques described on page 9 apply for the individual model types and in strict compliance with the instructions of use. These machines are designed exclusively for use indoors.



Danger:

Changes to the machine without authorization from Diversey will invalidate the safety marks and CE conformity. Using the machine in a way contrary to the intended purpose can cause personal injury as well as damage to the machine and the working environment. Such cases will usually result in the termination of any warranty and any possible guarantee claims.

Safety instructions

Due to their design and construction, TASKI machines comply with the relevant essential health and safety requirements of the EC directives; they therefore have the CE sign.



Danger:

The machine may only be used by persons who are adequately trained to use the machine or who have provided proof of their skills for using the machine and who are explicitly tasked with using the machine.



Danger:

The machine must not be used by people with reduced physical, sensory, or mental capacities, including children or people who lack experience or knowledge.

Children must be supervised to ensure that they do not play with the machine.



Danger:

Do not use the machine in rooms where explosive or highly combustible substances (e.g. gas, solvents, heating fuel, dust, etc.) are stored or processed.

These substances could be ignited by the electrical or mechanical components of the machine.



Danger:

Do not use the machine to vacuum up toxic, harmful, corrosive or irritant substances (e.g. dangerous dust, etc.) or flammable liquids. The filter system does not adequately filter out these kinds of substances.

Possible impacts on the health of the user or third persons cannot be ruled out.



Danger:

Pay attention to conditions in the area as well as third persons and children! In the vicinity of blind spots, such as doors or curves, it is important to reduce speed.



Danger:

Do not transport additional persons and objects with this machine.



Danger:

If the machine malfunctions, there is a defect, the machine collides with something, or the machine topples over, it must be inspected by an authorized expert before restarting. The same applies if the machine was left outdoors, immersed in water, or exposed to moisture.



Danger:

Cease operation of the machine immediately if safety-related parts such as brush covers, power supply cords, or covers that enable access to live parts are damaged!



Danger:

Do not stop, park, or store the machine on slopes.

STOP Danger:

Whenever work is performed on the machine, it must be switched off and the key must be removed.

STOP Danger:

The machine can be used on slopes <2% while cleaning.

STOP Danger:

The machine can be used on slopes <10%. Be sure to drive slowly on slopes using the "turtle mode" in order to ensure the machine can be stopped safely. Sharp cornering on slopes can affect the stability of the machine and is therefore prohibited. Danger of accident.

STOP Danger:

The machine may only be used on a paved, stable and sufficiently strong load-bearing surface.

In the case of non-adherence there is a risk of accidents.

Warning:

The machine must be operated and stored exclusively in a dry and low-dust environment at temperatures between +10°C / + 50 °F and +35°C / + 95 °F degrees.

Warning:

Only authorized experts who are familiar with all safety instructions relevant to this machine are allowed to repair mechanical or electrical machine parts.

Warning:

Only tools (brushes, pads or similar) that are specified in these instructions of use under accessories, or which have been recommended by a TASKI consultant, may be used. Any other brushes might impair the safety and functions of the machine.

Warning:

National regulations for personal protection and accident prevention, as well as the manufacturer's instructions for the use of cleaning solutions, must be consistently observed.

Caution:

Use this machine with suitable batteries and approved chargers only.

Caution:

The machine must be protected against unauthorized use. Always pull out the key before leaving the machine or store the machine in a locked room.

Notice:

TASKI machines and devices are designed such that health risks caused by noise emissions or vibrations can be ruled out according to the current state of science.

See the technical data on page 13.

Cleaning products

Notice:

TASKI machines are designed to produce optimal cleaning results when TASKI cleaning products are used. Other cleaning products may cause malfunctions and damage to the machine or the environment. Therefore, we recommend the exclusive use of TASKI cleaning products.

Malfunctions caused by the use of inappropriate cleaning products are not covered by the warranty.

- For further details, please contact your TASKI service partner.

Further documents

Notice:

The machine's electric diagram can be found in the spare parts list.

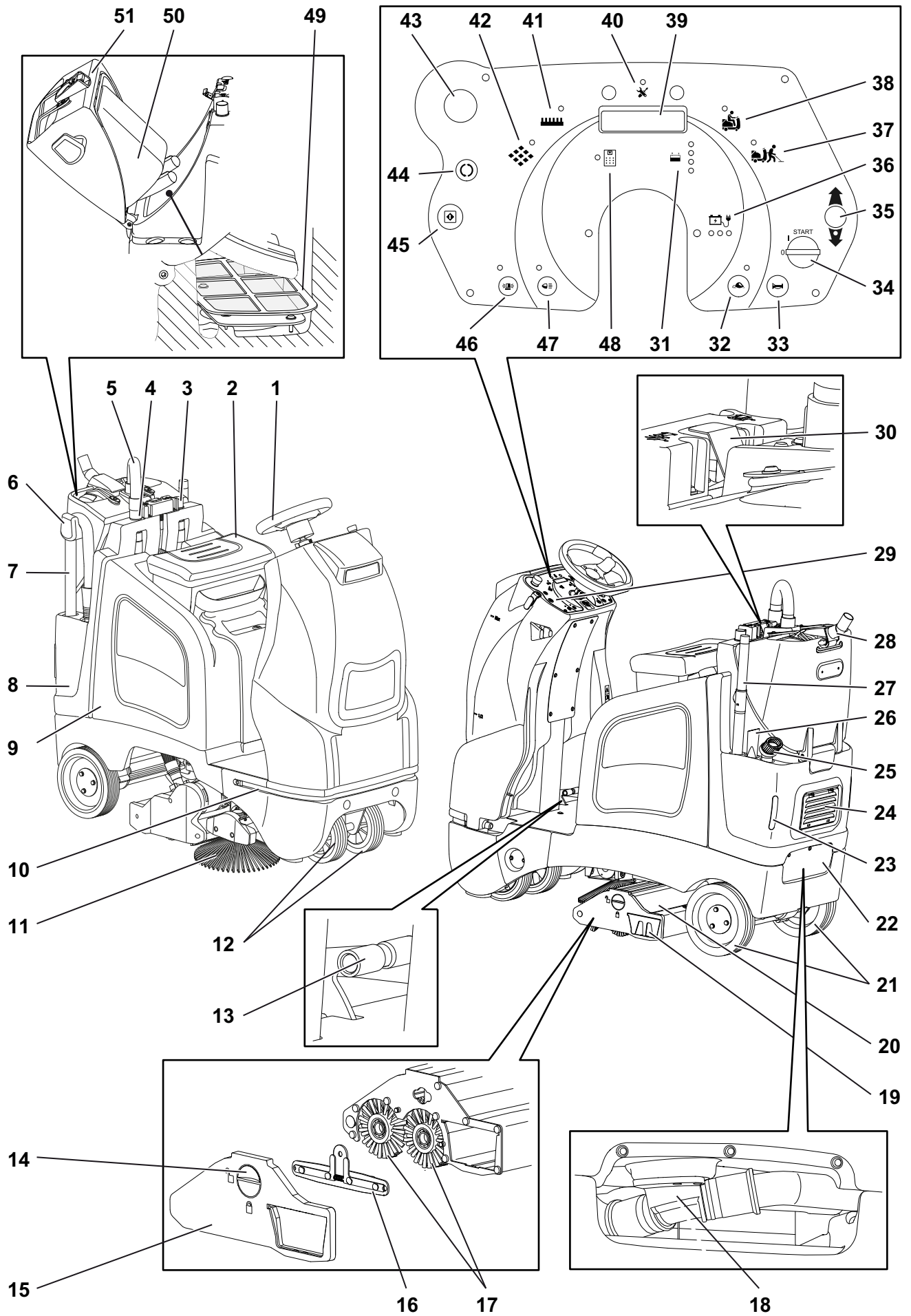
- Please contact your customer service for further information.

Notice:

These instructions of use, as well as all instructions of use for TASKI machines, are available on the following website:

www.taski.com/instructions-use

Structural layout



- 1 Steering wheel
- 2 Driver seat with seat switch (presence monitoring)
- 3 Suction hose connector auto mode
- 4 Suction hose connector manual mode
- 5 Suction hose (working modes: Auto & Manual)
- 6 Suction hose holder
- 7 Suction hose manual mode
- 8 Tank
- 9 Battery compartment
- 10 LED work light
- 11 Side broom
- 12 Castor wheels
- 13 Gas pedal
- 14 Brush unit cover lock
- 15 Brush unit cover
- 16 Brush holder
- 17 Roller brush
- 18 Suction hose connection nozzle
- 19 Dirt sieve
- 20 Brush unit
- 21 Drive wheels
- 22 Suction hose connection nozzle cover
- 23 Warning and reversing light LED
- 24 Filter (HEPA optional)
- 25 Dusting nozzle
- 26 Crevice nozzle
- 27 Telescope tube
- 28 Combi sliding nozzle
- 29 Operating panel
- 30 Tank cover lock
- 31 Battery indicator
- 32 Slow approach button (ON/OFF)
- 33 Horn button
- 34 Key switch
- 35 Reversing button
- 36 Battery charging level indicator
- 37 Manual mode indicator
- 38 Auto mode indicator
- 39 Display
- 40 Service display
- 41 Brush unit setting carpet indicator
- 42 Brush unit setting hard floor indicator
- 43 Emergency stop
- 44 Carpet/hard floor setting button
- 45 Program button (ON/OFF)
- 46 LED warning light buttons (ON/OFF)
- 47 LED work light button (ON/OFF)
- 48 Dust bag indicator
- 49 Filter cloth
- 50 Fleece dust bag
- 51 Tank cover

Batteries

Permissible batteries

Traction batteries must be used in this machine (no wet battery sets, starter or device batteries). We recommend the use of pure traction batteries. Only these batteries can ensure a long service life.

Traction batteries are produced as closed and maintenance-free (VRLA) batteries (gel and AGM, Pure Lead, and lithium). The machine must be adjusted accordingly for each design type and manufacturer. Each battery has a different service life and performance.

The machine and charger must be programmed after the batteries have been inserted, when the battery type and/or the manufacturer are changed, and prior to starting the machine.

Incorrect adjustment may result in early battery failure.

Notice:

Do not use different, old batteries with new or defective batteries.

Notice:

Old and/or defective batteries must be disposed of properly. See the information on page 14

Safety measures to be taken when handling batteries



Batteries contain acid. Always wear safety goggles when performing maintenance, installing, or removing wet battery sets.



Rinse acid splashes in your eyes or on your skin with plenty of clear water. Then immediately consult a doctor. Wash your clothes with water!



Charging batteries creates a dangerous gas mixture. Keep away from open fire or glowing embers.



Do not smoke!



Danger of acid burns!



Attention! The battery poles are always energized, therefore do not place any objects on the batteries!

Caution:

Keep batteries clean and dry. Immediately wipe off leaking acid or water.

- Wear protective gloves for this purpose.

Caution:

Batteries may only be installed by service agencies or experts approved by Diversey; they must be installed in compliance with the connection diagram.

Installation and/or connection errors may result in severe injury, explosion and major damage to the machine and the environment.

⚠ Caution:

Ensure adequate ventilation when charging the battery.

i Notice:

The product safety data sheet provided by the battery manufacturer must be observed.

i Notice:

The operating instructions provided by the battery manufacturer must be met.

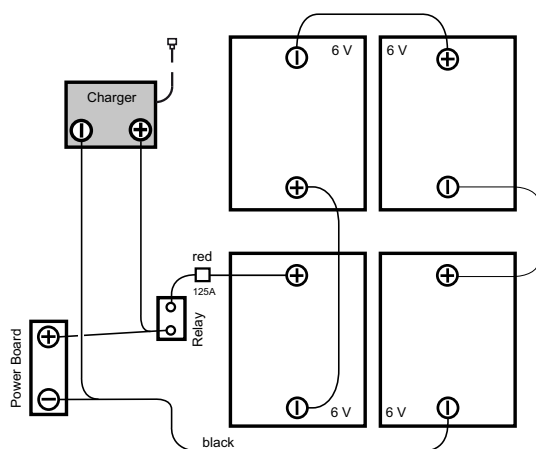
⚠ Caution:

Always disconnect the batteries from the machine before starting maintenance work.

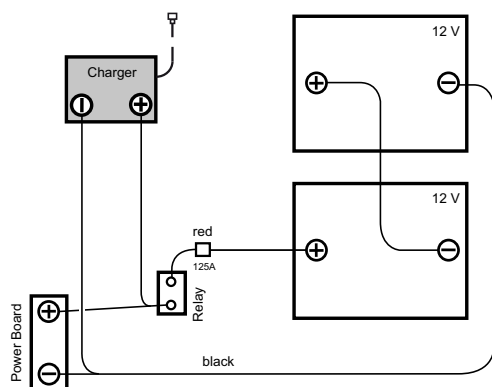
Battery connection diagram

AERO 3500µ (Gel)

6V batteries



12V batteries



Charging process

⚠ Caution:

Please pay careful attention to the instructions of use provided by the manufacturer of the external battery charging device.

⚠ Caution:

Each battery type and/or battery manufacturer requires different charging characteristics. *Incorrect charging characteristics or the use of inappropriate chargers may result in early failure or the quick destruction of batteries.*

i Notice:

Optionally available on-board chargers are adapted to the battery size and contain several charging curves, which are adjusted ex factory or by a TASKI service technician for recommended batteries. This regulation also applies for the use of stationary (external) chargers.

⚠ Caution:

Persistent short-term use with subsequent battery charging may cause long-term damage to the batteries.

- Standard value: At least approx. 20% of the available capacity should be used up before recharging the battery.

⚠ Caution:

In order to achieve the maximum possible service life, traction batteries must run through a complete charging cycle (12-16 hours) twice a week.

⚠ Caution:

Before decommissioning the machine for a longer period, the batteries must run through a complete charging cycle. The charger is then disconnected from the machine and/or mains. Batteries gradually discharge. Depending on the type of battery, they must be recharged after 3-6 months.

- Before recommissioning, the batteries should run through another complete charging cycle.

Charging procedure with external charger

i Notice:

Only chargers recommended by the battery manufacturer and certified according to SELV (safety extra-low voltage) may be used.

STOP Danger:

Do not plug the charger into the machine while it is under tension (charger switched on).

The user may be injured by electric shock.

⚠ Warning:

Charging cables transfer high currents. Do not use the charger if there are any signs of damage to the plug, cable, or device connection.

- Connect the external battery charger with the battery charging plug of the machine.

i Notice:

Make sure that the plug is inserted up to the stop in order to ensure a good electrical contact.

i Notice:

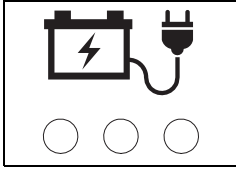
Check whether the plugged-in charger has started the charging process.

i Notice:

All machine functions are deactivated during charging.

Charging procedure with (optional) on-board charger

- The machine must be switched off.
- Connect the main cord with a socket (protected by slow fuse).



- The yellow indicator is constantly lit until approx. 90% of the battery capacity has been reached. Afterwards, the indicator flashes until the battery is fully charged.
- When the charging process is complete, the green indicator is lit.

After charging

⚠ Warning:

Switch off the charger before disconnecting it from the batteries.

Disconnecting the charger while it is still switched on may cause an explosion in the battery compartment.

- Stow away the power cord for (optional) on-board chargers in the provided compartment.
- Store the charging cable in a dry place where it is protected against damage.

Maintenance and care of open batteries

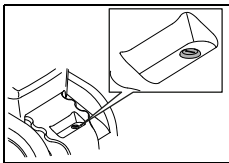
i Notice:

Caring for maintenance-free batteries only entails following proper charging procedures and configuring the charging curve correctly.

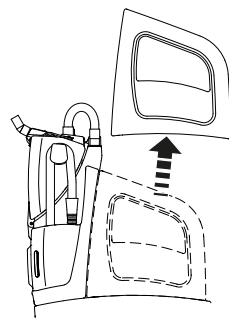
Open battery compartment for maintenance

- The machine must be switched off.
- Remove the driver seat from the seat hood and place it on the floor.

In this way you prevent the driver seat from falling down and thereby prevent injuring people.



- Unlock the battery compartment with the provided key.



- Remove the seat hood and carefully place it on the floor.

Now the battery can be serviced according to the manufacturer's notification.

Prior to commissioning

Parking brake

- The parking brake is automatically unlocked by the electronics when actuating the gas pedal.

i Notice:

When the machine is standing still, the parking brake is always activated.

This is regardless of whether the machine is switched on or off.

Release:

i Notice:

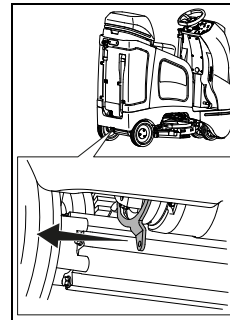
The driver seat is equipped with a seat switch (presence detection). This seat switch is actuated when the driver seat is occupied by the operating personnel.

The machine can only be operated when the seat switch is actuated.

Emergency stop:

i Notice:

If the steering or power supply fails, the parking brake can be released by hand.



- To this end, the unlocking lever must be permanently pulled. The lever is situated near the left rear wheel.

Check emergency stop

⚠ Caution:

The emergency stop button is an important safety element.

- Therefore, the function of the button must be checked regularly in short time intervals, before using the machine.
 - Switch the machine on.
 - Press the driving switch while keeping the steering wheel straight. The machine will start to move straight ahead.
 - Now press the emergency stop.

i Notice:

The machine must abruptly brake to a complete stop and drive straight ahead without steering correction.

STOP Danger:

If one of these functions is not working, the machine must be decommissioned until it can be professionally repaired by an authorized TASKI service partner.

Warning devices

Warning:

Warning devices such as warning light, flashing light and signal tone when reversing must be regularly checked for functioning. Malfunctions must be resolved immediately.

Heightened caution and awareness is required to operate the machine if any of the warning devices are missing or defective.

- Covering the warning devices is forbidden.

Warning:

National regulations always take priority.

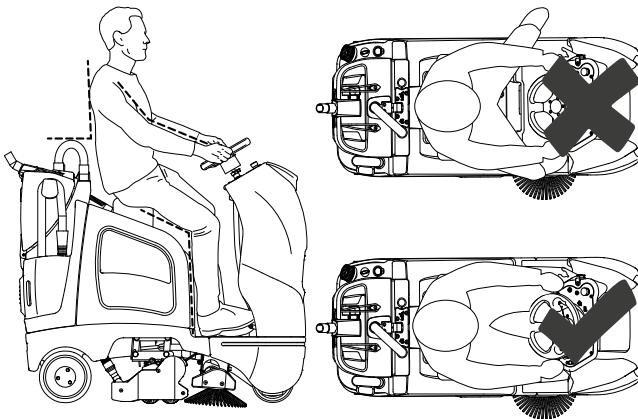
- These can require different rules of conduct and absolutely must be adhered to.

Adjust sitting position

Notice:

The driver seat and steering wheel can be adjusted as required in order to achieve a comfortable sitting position.

Recommended sitting posture

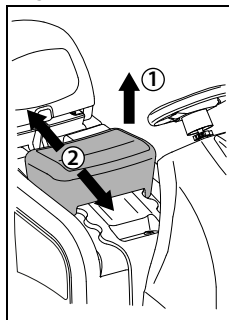


Warning:

Pay attention to maintaining the correct sitting posture. Your legs must not laterally protrude from the machine.

Lateral protruding of the legs may lead to severe injuries in narrow passages or on fixed objects (e.g. railings, posts, etc.) in the cleaning environment.

Adjust driver seat

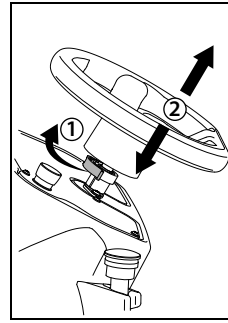


- The position of the driver seat can be adjusted by lifting [1] and sliding [2] it.

Notice:

Make sure the driver's seat is correctly positioned in the grooves provided

Adjust steering wheel



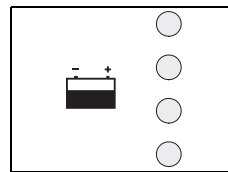
- Unlock the lever [1], adjust the steering wheel [2] to the desired position, and lock the lever again.

Relocation drive

The driving direction can be controlled with the steering wheel and the speed with the gas pedal. The speed is continuously regulated. When the gas pedal is released, the machine decelerates until it stops and the parking brake is activated.

Driving forward

- Switch on the machine (key switch).
- All indicator elements light up briefly. *The battery level indicator notifies you that the machine is ready for operation. (in case of malfunction, see page 13).*

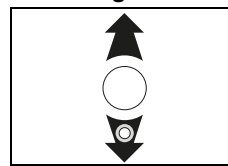


- To drive forward, you only need to press the gas pedal.

Caution:

The speed is electronically reduced for driving around corners.

Reversing



- When the reversing button is activated, the indicator below lights up and an acoustic signal is emitted.

Moving the machine (in case of defect)

Notice:

Generally, the machine should only be moved in pairs.

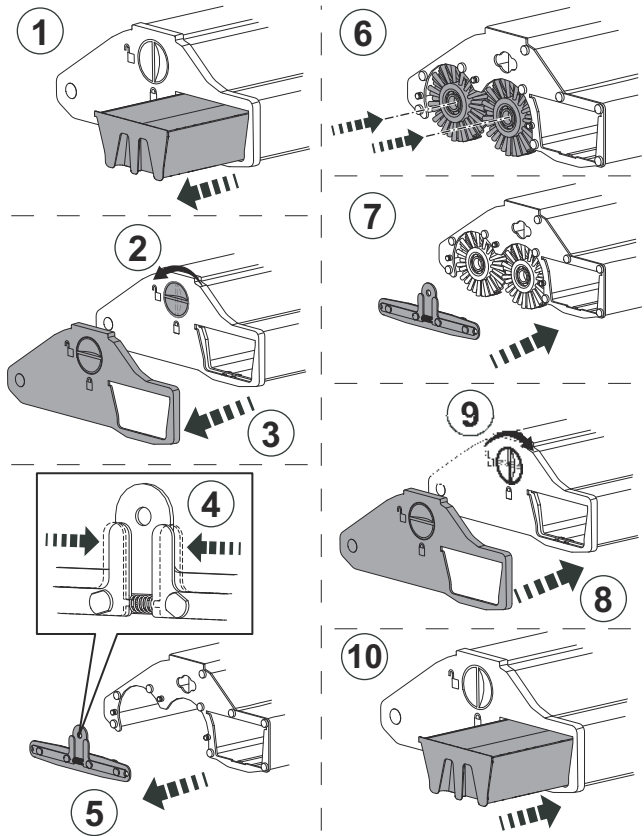
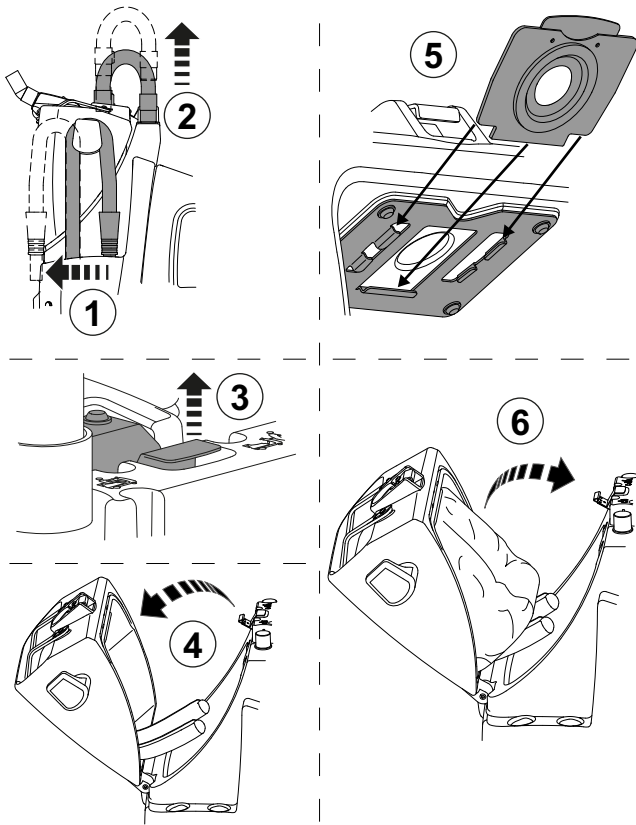
Warning:

Due to its heavy weight, moving the machine manually is very risky!

Missteps can lead to personal injury and damage to the machine.

- It can only be moved once the release button/lever is activated. (See page 7)

Dust bag installation



i Notice:

Never use the machine without an inserted fleece dust bag.

Roller brush installation

Before inserting, please ensure

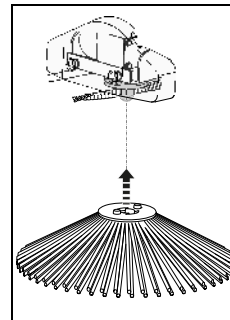
- that the brush is not below the red/yellow marking or the bristles are not shorter than 1.4 cm.

⚠ Caution:

Do not use brushes that have reached their wear limit. Use original TASKI brushes only.

Failure to observe these instructions may result in inadequate cleaning results or even floor damage.

Side broom installation



- Press the side broom upwards into the provided socket.
- Turn the side broom clockwise until the knobs clip into the socket holes.

i Notice:

You will know the side broom is installed correctly when it becomes impossible to turn it by hand.

Application technique

Machine	
Wet cleaning	No
Basic cleaning	No
Shampoo wet	No
Shampoo dry	No
Dry cleaning (hard floors and carpets)	Yes

Beginning work with the machine

Caution:

Always wear slip-resistant shoes and appropriate working clothes when working with this machine!

Caution:

To ensure safe operation, always keep both hands on the steering wheel/driving handle while operating the machine.

Caution:

When driving the machine for the first time, test it out in an empty space to get familiar with the machine.

Warning:

Before beginning work (in the work position), check whether your field of vision is sufficient to ensure safe working. EN 3411 must be adhered to.

An insufficient field of vision can make work difficult and therefore impair safety for the operator, machine, and third parties.

Warning:

While working, pay attention to the maximum clearance height for doors and underpasses shown on the warning sign on the machine.

Danger:

If there is a danger of falling objects while the machine is in use, the necessary safety precautions must be taken or adhered to in accordance with national regulations.

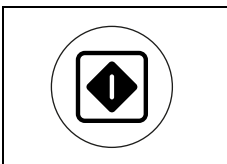
Notice:

When working in public buildings, the warning light must be switched on.

- Sit down on the driver seat.
- Check whether the emergency stop button is released.
- Switch on the machine (key switch).

The indicator elements will light up briefly.

Starting the machine using the program button



- By pressing the program button for the next operation start or work step, all machine functions are started on the basis of the functional values last used.

Notice:

The set values can be adjusted at any time during operation.

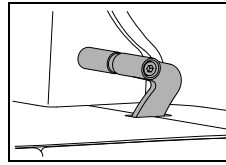
The values set when the machine is switched off are stored and will be automatically activated when the machine is restarted.

Notice:

Pressing the program button when the cleaning process is finished will start an optimized program for the end of operation. See instructions on page 11 in the "Automatic process" chapter.

Settings and activated functions are saved.

Cleaning start



- If the machine is switched on and the operator is sitting in the driver's seat, the machine will start moving as soon as the gas pedal is depressed. The brush unit and side broom are activated.

Notice:

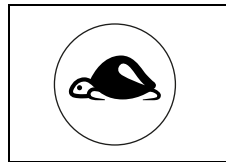
The speed is controlled by the position of the gas pedal. When the gas pedal is released, the machine will automatically decelerate until it stops and the parking brake is activated.

The side broom and the brush unit are stopped.

Caution:

When working in restricted or narrow areas, it is recommended to press the slow approach ON/OFF button. (Display lights up)

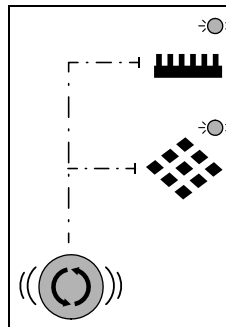
This reduces the maximum working speed, thus also reducing the risk of accidents.



- Pressing this button once more will override this restriction and the display will disappear.

Brush unit setting

The brush unit can be individually set for two different types of flooring.



- In order to configure the setting, activate the carpet/hard floor setting button.

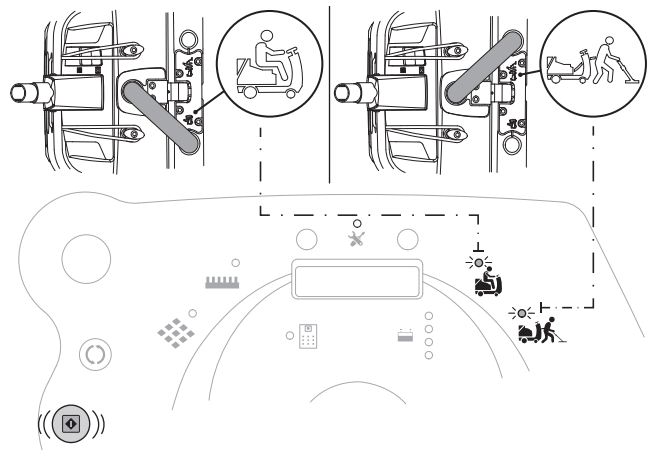
The configured selection will be shown on the operating panel.

Working modes

This machine has two different working modes. An auto and manual mode.

Auto mode

Manual mode



i Notice:

In some circumstances, certain combinations of flooring/soiling and cleaning products may impair the guiding of the machine.

- Optionally available wheels can improve the machine's traction on the floor. Please contact your TASI customer consultant.

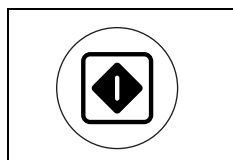
Battery capacity - end of operational readiness

The battery level indicator provides information on the available operating time.

- If the red indicator begins to flash, approx. 5 minutes of working time are left.
- The brush unit and side broom will be pulled up after that. The red display switches to a continuous light.
- Now you have 10 minutes to drive the machine to the charging station. Then the machine is automatically switched off.
- In order to restart, the batteries must be fully charged.

End of operation

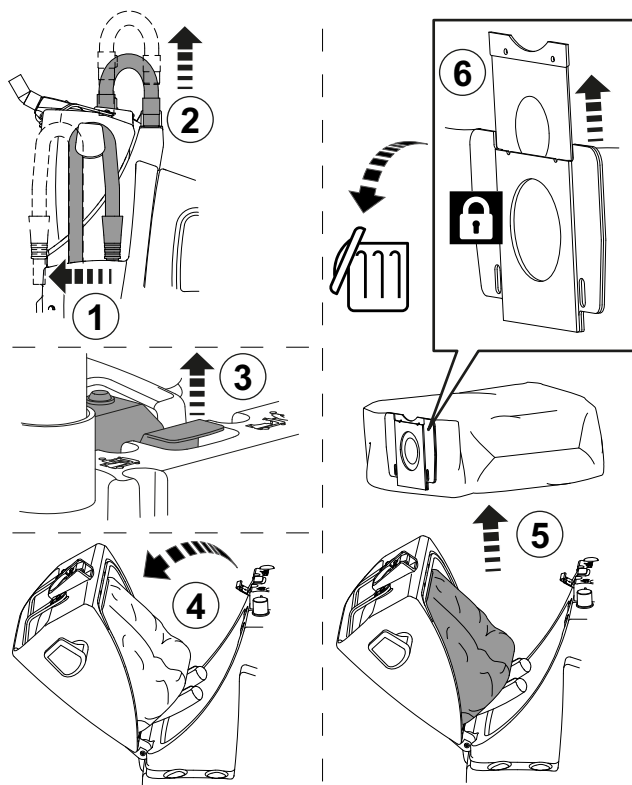
Automatic process



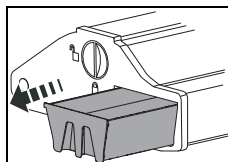
- Press the Program ON/OFF button.

- The suction motor is switched off.
- The side broom and brush unit are stopped and pulled up.

Replacing the dust bag

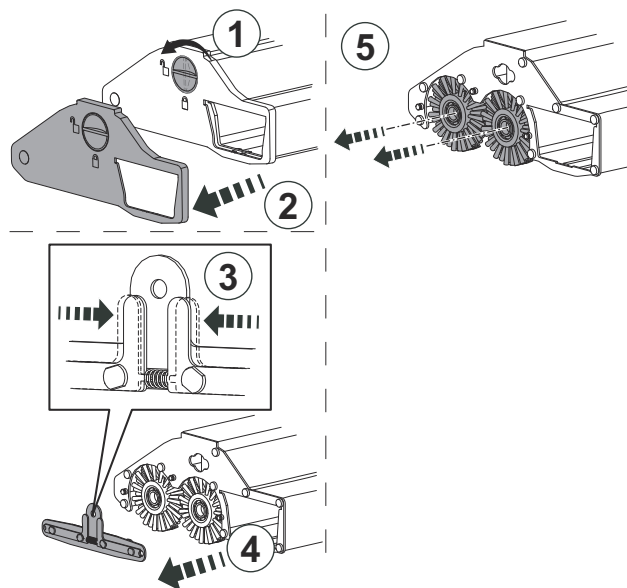


Removing and cleaning the dirt sieve



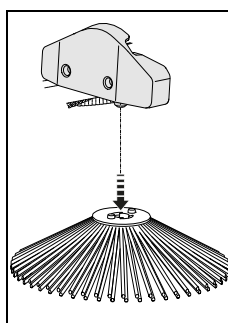
- Empty the dirt sieve and vacuum the remaining dust out with a vacuum cleaner.

Removing and cleaning the roller brush



- Remove any hair wound around the brush or similar debris and vacuum the rest of the dust up with a vacuum cleaner.

Removing and cleaning the side broom



- Remove any hair wound around the side broom or similar debris and vacuum the rest of the dust up with a vacuum cleaner.

Cleaning the machine

⚠ Caution:

Never clean the machine with a high-pressure cleaner or water jet.

Water ingress in the machine may cause considerable damage to the mechanical or electrical parts.

- Wipe the machine with a moist cloth.

Storing/parking the machine (not in operation)

i Notice:

Store the machine with a lifted brush unit and removed brushes.

⚠ Caution:

Never store the machine with uncharged batteries. Otherwise, the batteries will be damaged beyond repair.

Service, maintenance and care

The maintenance of the machine is a prerequisite for impeccable operation and a long service life.

Caution:

Use original TASKI parts only; otherwise any warranty and liability claims will be invalidated.

Notice:

In order to rule out unintended machine functions, the following must always be carried out before starting maintenance works

- the machine must be switched off,
- the key removed and
- the emergency stop confirmed.

Legend:

◇ = after every cleaning, ◇◇ = every week,
◇◇◇ = every month, ⊗ = service light

Activity	◇	◇◇	◇◇◇	⊗	Page
Charge batteries	•				6
Clean all parts marked in yellow	•				
Clean the roller brushes	•				11
Clean the side broom	•				11
Check/replace dust bag	•				11
Check/replace filter cloth	•				4
Check/replace exhaust filter		•			4
Check/replace HEPA filter		•			4
Wipe the machine using a damp cloth	•				11
Check emergency stop button				•	7
Maintenance and service program carried out by Diversey service technicians				•	

Service intervals

TASKI machines are high-quality machines that have been inspected for safety at the factory by authorized inspectors. Electrical and mechanical parts are subject to wear and aging after a longer period of use.



- In order to maintain operational safety and readiness for use, the machine must be serviced whenever the maintenance indicator lights up (factory setting is 650 working hours) or at least once a year.

Notice:

In case of extraordinary use and/or insufficient maintenance, shorter intervals may be required.

Service center

Please always indicate the type and number of the machine whenever you contact us to place an order or in case of malfunctions.

You can find this information on the nameplate of your machine. The address of your closest TASKI service partner is provided on the last page of these instructions of use.

Malfunctions

Malfunction	Possible causes	Troubleshooting	Page
Machine not functional, cannot be turned on	Machine is switched off	• Turn the key	4
	Emergency stop button pressed	• Release the emergency stop button	4
	Error code on the display	• Contact your service partner	14
	Immobilizer activated or fault in the controls	• Sit down on the driver seat	
	Batteries not charged or battery charger defective	• Charge batteries • Contact your service partner	7
	Batteries defective	• Contact your service partner	
Brush does not rotate	Brush drive switched off	• Press program button	4
	Motor rotates, brush does not	• Drive belt defective • Check if the tool is engaged • Contact your service partner	
Poor suction performance	Suction hose not connected correctly	• Connect suction hose	10
	Suction hose blocked	• Cleaning the suction hose	4
Brush unit or suction unit cannot be turned off	Error in the electronic system or in the control panel	• Stop the machine using emergency stop • Contact your service partner	4

Technical information

Machine		
Working width	65	cm
Roller brush width	51	cm
Dimensions (L x W x H)	135 x 58 x 128	cm
Maximum weight of operational machine	380	kg
Rated voltage	24V	DC
Rated power, nominal	1300	W
Effective volume	15	l

Values according to IEC 60335-2-72		
Sound pressure level LpA	<70	dB(A)
Uncertainty KpA	2.5	dB(A)
Total vibration	<2.5	m/s ²
Uncertainty K	0.25	m/s ²
Splash water guard	IPX3	
Protection class	III	

Accessories

No.	Item
7524872	One-way fleece dust bag AERO 3500 (10 pcs./packaging)
7524873	HEPA filter H13 AERO 3500
7524874	MopBox Support AERO 3500
7524875	Tool Holder AERO 3500
7524877	Roller brush kit AERO 3500
7524878	Side broom AERO 3500
7524879	Filter Fleece AERO 3500 (5 pcs./packaging)
7524880	Exhaust air filter AERO 3500 (5 pcs./packaging)

Error codes

Error codes are indicated on the display.

i Notice:

Switch the machine off and on again whenever an error code occurs.

Error codes might be remedied by switching the machine off and on.

Transport

⚠ Warning:

This machine may only be lifted using lifting gear (e.g. hoist, loading ramp, etc.).

⚠ Caution:

The battery disconnection socket must be disconnected for transport.

i Notice:

Transport the machine in an upright position.

i Notice:

Make sure that the machine is securely tied down in the transport vehicle.

Disposal

i Notice:

After decommissioning, the machine and accessory parts must be adequately disposed of in compliance with the national regulations.

- Please contact your Diversey service partner for help.

Batteries

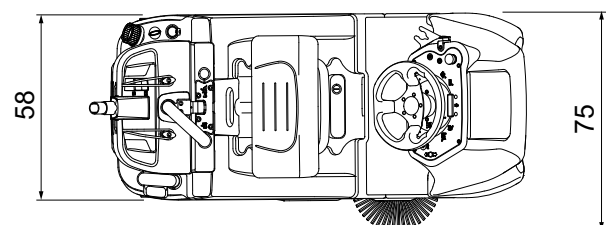
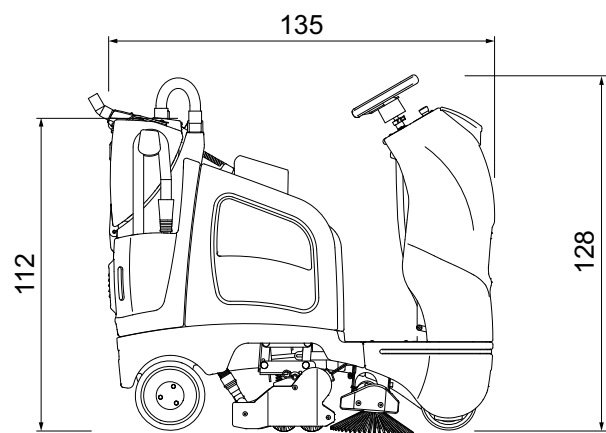
⚠ Warning:

Remove all batteries from the machine prior to proper disposal.

Used batteries must be disposed of in an environmentally friendly way in compliance with the EC directive 2006/66/EC or the respective national regulations.

Machine Dimensions

The dimensions are in centimeters!



AT Diversey Austria Trading GmbH Guglgasse 7-9 1030 Wien Tel (43) 1 605 57 0	BE Diversey Belgium BVBA Haachtsesteenweg 672 1910 Kampenhout Tel (32) 16 61 77 06	CH Diversey Europe B.V., Utrecht Zweigniederlassung Münchwilten Eschlikonerstrasse 9542 Münchwilen Tel (41) 71 969 27 27	CZ Diversey Ceska republika, s.r.o K Hájum 1233/2 155 00 Praha 5 Tel (420) 296 357 460
DE Diversey Deutschland GmbH & Co. OHG Mallaustrasse 50-56 68219 Mannheim Tel (49) 0800 82 75 473	DK Diversey Danmark ApS Teglbuén 10 2990 Nivaa Tel (45) 70 10 66 11	ES Diversey España S.L. C/Orense 4, 5 planta 28020 Madrid Tel (34) 91 394 01 75	FI Diversey Eliel Saarisentie 2 00400 Helsinki Tel (358) 20 747 42 30
FR Diversey (France) S.A.S. 9/11, avenue du Val de Fontenay 94133 Fontenay sous Bois Cédex Tel (33) 1 45 14 76 76	GB Diversey Limited Weston Favell Centre NN3 8PD Northampton Tel (44) 1604 405 311	GR Diversey Hellas S.A. 5 Himaras St 15125 Marousi Tel (30) 210 638 59 00	HU Diversey Ltd. Puskás Tivadar u. 6. 2040 Budaors Tel (36) 23 509 100
IE Diversey Hygiene Sales Limited Ballyfermot office Westlink industrial estate Kylemore road Dublin 10 Tel (353) 1 626 11 82	Diversey S.r.L. Via Meucci 40 20128 Milano Tel (39) 02 25 80 32 33	MT Forestals (Appliances) Ltd. The Strand SLM 07 Sliema Tel (356) 21 344 700-7	Diversey B.V. Maarssebroeksedijk 2 P.O. Box:40441 3542 DN Utrecht Tel (31) 30 247 69 11
NO Lilleborg Profesjonell Postboks 673 - Skøyen 0214 Oslo Tel (47) 815 36 000	PL Diversey Polska Sp. z.o.o. Ul.Fabryczna 5a 04-028 Warszawa Tel (48) 22 516 30 00	PT Diversey Portugal-Sistemas de Higiene e Limpeza Unipessoal Lda Z. Ind.Abrunheira 2714-505 Sintra Tel (351) 2 191 57 000	RO Diversey Romania S.R.L. Baneasa Business Center, Etaj 5 Sos.Bucuresti - Ploiesti 17-21 Sector 1, Bucuresti Tel (40) 21 233 3894
RU LLC Diversey 125445, Russia, Moscow, 24D Smolnaya str, Meridian Commercial Tower 2d floor Tel (7) 095 970 17 97	SV Diversey Sverige AB Liljeholmsvägen 18 Box 47313 10074 Stockholm Tel (46) 877 99 300	SK Diversey Slovensko s.r.o Rybničná 40 831 06 Bratislava Tel (421) 2 4445 4895	SL Diversey d.o.o. Trzaska cesta 37a 2000 Maribor Tel (386) 2 320 7000
TR Diversey Sanayi ve Ticaret A.S. İçerenköy Mahallesi, Bahçelerarası Sok.No:43 34752 Ataşehir / İstanbul, Türkiye Tel (90) 216 57 86 400	Diversey 2415 Cascade Pointe Boulevard Charlotte, NC USA, 28277 Tel 1-800-827-5487	CA Diversey 3755 Laird Road Mississauga, Ontario CANADA L5L 0B3 Tel 1-800-827-5487	